



Ontario Clean Water Agency
Agence Ontarienne Des Eaux

2005 Client Monthly Operations Report
The Nation Municipality

St. Albert Wastewater Lagoon & Collection System

Réunion Conseil
Council Mtg 16/01/06
D M YR
Action reports
Clerk DM
Greffier DM

Facility Description

Hub Name:	Alfred Hub
Facility Type:	Municipal
Classsification	Class 2 Wastewater Collection, Class 1 Wastewater Treatment
Title Holder:	Municipality
Operation Status:	OCWA
Operator Manager:	Jacques Breen, (613) 679-4631
Asst. Ops. Mgr.	Harold Wilkinson, (613) 679-4631
Client Service Rep	John Kingsbury, (613) 774-3663
Capacity(m3/d):	720
Service Area:	Village of St. Albert
Service Population:	1000
Inservice Date:	1995

Operational Description:

One Pumping Station and a three Cell Lagoon plus one Aeration Cell with continuous Phosphorous Removal and Discharged Annually.

Treatment Process

Major Process:	
Phosphorus Removal:	Continuous
Additional Treatment:	
Discharge Mode:	Annual discharge
Effluent Disinfection Practice:	
Sludge Stabilization:	
Sludge Disposal:	

Performance Data and Compliance

Influent Flow Data		Jan	Feb	Mar	Apr	May	Jun	Jul	Aug	Sep	Oct	Nov	Dec	Limit
Avg Day Raw Flow m3	Avg	374.97	250.21	236.65	377.87	223.45	240.47	199.52	170.03	369.77	401.61	343.40	263.39	
Max Day Raw Flow m3	Max	451.00	308.00	517.00	669.00	340.00	377.00	1,336.00	285.00	483.00	577.00	567.00	405.00	
Tot Month Raw Flow m3	Total	11,624.00	7,006.00	7,336.00	11,336.00	6,927.00	7,214.00	6,185.00	5,271.00	11,093.00	12,450.00	10,302.00	8,165.00	
Influent Quality		Jan	Feb	Mar	Apr	May	Jun	Jul	Aug	Sep	Oct	Nov	Dec	Limit
BOD5/CBOD5 (mg/L)	Avg	55.00	58.00	226.00	256.00	140.00	95.00	163.00	148.00	52.00	111.00	70.00	48.00	
SS (mg/L)	Avg	52.00	20.50	236.00	1,480.00	90.00	60.00	112.00	148.00	180.00	248.00	100.00	70.00	
TP (mg/L)	Avg	18.10	68.00	10.60	6.59	4.83	3.77	6.12	9.47	8.05	8.87	6.04	2.77	
Treated Flow Data		Jan	Feb	Mar	Apr	May	Jun	Jul	Aug	Sep	Oct	Nov	Dec	Limit
Avg Day Treated Flow m3	Avg			7,939.64	3,117.99									
Max Day Treated Flow m3	Max			12,044.00	3,263.00									
Tot Month Treated Flow m3	Total			87,336.01	46,769.80									
Treated Quality		Jan	Feb	Mar	Apr	May	Jun	Jul	Aug	Sep	Oct	Nov	Dec	Limit
BOD5/CBOD5 (mg/L)	Avg			7.67	3.00									
SS (mg/L)	Avg			9.67	14.50									
TP (mg/L)	Avg			0.64	0.22									
Comments														

<General> - [10/15/2005] Suspect that the cheese factory flow meter is malfunctioning



Ontario Clean Water Agency
Agence Ontarienne Des Eaux

2005 Client Monthly Operations Report
The Nation Municipality

St. Albert Wastewater Lagoon & Collection System

Réunion Conseil 21/11/05
Council Mtg 21/11/05
Section reports
Clerk MP
Treasurer

Facility Description

Hub Name:	Alfred Hub
Facility Type:	Municipal
Classification	Class 2 Wastewater Collection, Class 1 Wastewater Treatment
Title Holder:	Municipality
Operation Status:	OCWA
Operator Manager:	Jacques Breen, (613) 679-4631
Asst. Ops. Mgr.	Harold Wilkinson, (613) 679-4631
Client Service Rep	John Kingsbury, (613) 774-3663
Capacity(m3/d):	720
Service Area:	Village of St. Albert
Service Population:	1000
Inservice Date:	1995

Operational Description:

One Pumping Station and a three Cell Lagoon plus one Aeration Cell with continuous Phosphorous Removal and Discharged Annually.

Treatment Process

Major Process:	Continuous
Phosphorus Removal:	
Additional Treatment:	
Discharge Mode:	Annual discharge
Effluent Disinfection Practice:	
Sludge Stabilization:	
Sludge Disposal:	

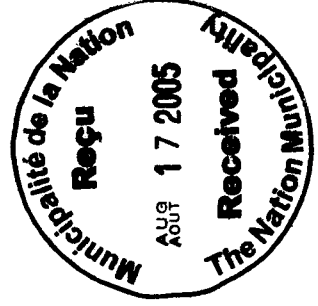
14.1 (iv)



2005 Client Monthly Operations Report
The Nation Municipality

St. Albert Wastewater Lagoon & Collection System

Reunion Conseil 22 / 08 / 05
Council Mtg D M YR
Action Report
Clerk [Signature]
Greffier [Signature]



Facility Description

Hub Name:	Alfred Hub
Facility Type:	Municipal
Classification:	Class 2 Wastewater Collection, Class 1 Wastewater Treatment
Title Holder:	Municipality
Operation Status:	OCWA
Operator Manager:	Jacques Breen, (613) 679-4631
Asst. Ops. Mgr.	Harold Wilkinson, (613) 679-4631
Client Service Rep	John Kingsbury, (613) 774-3663
Capacity(m3/d):	720
Service Area:	Village of St. Albert
Service Population:	1000
Inservice Date:	1995

Operational Description:

One Pumping Station and a three Cell Lagoon plus one Aeration Cell with continuous Phosphorous Removal and Discharged Annually.

Treatment Process

Major Process:	
Phosphorus Removal:	Continuous
Additional Treatment:	
Discharge Mode:	Annual discharge
Effluent Disinfection Practice:	
Sludge Stabilization:	
Sludge Disposal:	



Ontario Clean Water Agency
Agence Ontarienne Des Eaux

2005 Client Monthly Operations Report

The Nation Municipality

St. Albert Wastewater Lagoon & Collection System

Réunion Conseil 16 / 05 / 05
Council Mtg D M YR
Action reports
Clerk MP
Greffier MP

Facility Description

Hub Name: Alfred Hub
Facility Type: Municipal
Classification: Class 2 Wastewater Collection, Class 1 Wastewater Treatment
Title Holder: Municipality
Operation Status: OCWA
Operator Manager: Jacques Breen, (613) 679-4631
Asst. Ops. Mgr.: Harold Wilkinson, (613) 679-4631
Client Service Rep: John Kingsbury, (613) 774-3663
Capacity(m3/d): 720
Service Area: Village of St. Albert
Service Population: 1000
Inservice Date: 1995

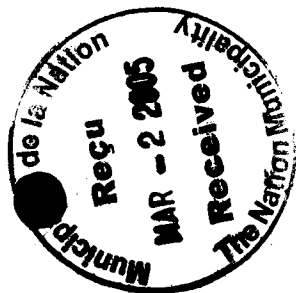
Operational Description:

One Pumping Station and a three Cell Lagoon plus one Aeration Cell with continuous Phosphorous Removal and Discharged Annually.

Treatment Process

Major Process:
Phosphorus Removal: Continuous
Additional Treatment: Annual discharge
Discharge Mode:
Effluent Disinfection Practice:
Sludge Stabilization:
Sludge Disposal:

[illegible]



Ontario Clean Water Agency
Agence Ontarienne Des Eaux

2005 Client Monthly Operations Report The Nation Municipality

St. Albert Wastewater Lagoon & Collection System

Réunion Conseil 14 / 03 / 05
Council Mtg D M YR
Action reports
Clerk M
Greffier

Facility Description

Hub Name:	Alfred Hub
Facility Type:	Municipal
Classssification	Class 2 Wastewater Collection, Class 1 Wastewater Treatment
Title Holder:	Municipality
Operation Status:	OCWA
Operator Manager:	Jacques Breen, (613) 679-4631
Asst. Ops. Mgr.	Harold Wilkinson, (613) 679-4631
Client Service Rep	John Kingsbury, (613) 774-3663
Capacity(m3/d):	720
Service Area:	Village of St. Albert
Service Population:	1000
Inservice Date:	1995

Operational Description:

One Pumping Station and a three Cell Lagoon plus one Aeration Cell with continuous Phosphorous Removal and Discharged Annually.

Treatment Process

Major Process:	
Phosphorus Removal:	Continuous
Additional Treatment:	
Discharge Mode:	Annual discharge
Effluent Disinfection Practice:	
Sludge Stabilization:	
Sludge Disposal:	

[illegible]



2004 Client Monthly Operations Report The Nation Municipality

St. Albert Wastewater Lagoon & Collection System

Réunion Conseil 14 / 02 / 05
Council Mtg D M YR
Action reports
Clerk [Signature]
Greiffier

Facility Description

Hub Name:	Alfred Hub
Facility Type:	Municipal
Classification:	Class 2 Wastewater Collection, Class 1 Wastewater Treatment
Title Holder:	Municipality
Operation Status:	OCWA
Operator Manager:	Jacques Breen, (613) 679-4631
Asst. Ops. Mgr.	Harold Wilkinson, (613) 679-4631
Client Service Rep	John Kingsbury, (613) 774-3663
Capacity(m3/d):	720
Service Area:	Village of St. Albert
Service Population:	1000
Inservice Date:	1995

Operational Description:

One Pumping Station and a three Cell Lagoon plus one Aeration Cell with continuous Phosphorous Removal and Discharged Annually.

Treatment Process

Major Process:	
Phosphorus Removal:	Continuous
Additional Treatment:	
Discharge Mode:	Annual discharge
Effluent Disinfection Practice:	
Sludge Stabilization:	
Sludge Disposal:	

Performance Data and Compliance

Influent Flow Data		Jan	Feb	Mar	Apr	May	Jun	Jul	Aug	Sep	Oct	Nov	Dec	Limit
Avg. Raw Flow (m3/d)	Avg	336.77	353.45	344.94	390.57	418.58	358.77	338.68	330.55	251.47	178.74	225.80	261.97	0.00
Max. Raw Flow (m3/d)	Max	384.00	439.00	572.00	442.00	483.00	396.00	350.00	447.00	366.00	206.00	327.00	327.00	0.00
Total Raw Flow (m3/d)	Total	10,440.00	10,250.00	10,693.00	11,717.00	12,976.00	10,763.00	10,499.00	10,247.00	7,544.00	5,541.00	6,774.00	8,121.00	0.00
Influent Quality		Jan	Feb	Mar	Apr	May	Jun	Jul	Aug	Sep	Oct	Nov	Dec	Limit
BOD5/CBOD5 (mg/L)	Avg	175.00	126.00	96.00	108.00	375.00	91.00	150.00	127.00	130.00	619.00	137.00	117.00	0.00
SS (mg/L)	Avg	168.00	128.00	116.00	160.00	320.00	108.00	128.00	130.00	76.00	165.00	86.00	132.00	0.00
TP (mg/L)	Avg	22.00	15.70	8.91	10.50	7.17	13.80	24.40	6.21	5.00	24.80	6.37	6.77	0.00
Treated Flow Data		Jan	Feb	Mar	Apr	May	Jun	Jul	Aug	Sep	Oct	Nov	Dec	Limit
Avg Treated Flow (m3/d)	Avg			10,610.78	1,978.31									0.00
Max Treated Flow (m3/d)	Max			15,552.00	2,457.75									0.00
Total Treated Flow (m3/d)	Total			106,107.82	53,414.37									0.00
Treated Quality		Jan	Feb	Mar	Apr	May	Jun	Jul	Aug	Sep	Oct	Nov	Dec	Limit
BOD5/CBOD5 (mg/L)	Avg			9.33	2.50									0.00
SS (mg/L)	Avg			17.33	8.00									0.00
TP (mg/L)	Avg			0.52	0.23									0.00
Comments														

<General>

[03/02/2004] Started aeration blowers.

[03/16/2004] Collected preliminary samples of cells content B, C and D.

[03/22/2004] Started Lagoon Discharge.

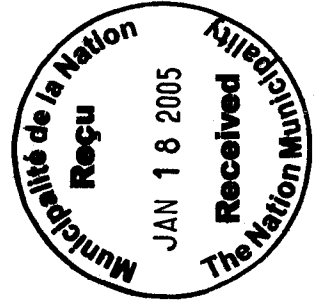
[04/27/2004] Last day of the Annual Lagoon discharge. All 5 sets of sampled have been collected.



2004 Client Monthly Operations Report
The Nation Municipality

St. Albert Wastewater Lagoon & Collection System

Réunion Conseil 24/01/05
Council Mtg 01 M / YR
Action reports
Clerk MPR
Greffier



Facility Description

Hub Name:	Alfred Hub
Facility Type:	Municipal
Classsification	Class 2 Wastewater Collection, Class 1 Wastewater Treatment
Title Holder:	Municipality
Operation Status:	OCWA
Operator Manager:	Jacques Breen, (613) 679-4631
Asst. Ops. Mgr.	Harold Wilkinson, (613) 679-4631
Client Service Rep	John Kingsbury, (613) 774-3663
Capacity(m3/d):	720
Service Area:	Village of St. Albert
Service Population:	1000
Inservice Date:	1995

Operational Description:

One Pumping Station and a three Cell Lagoon plus one Aeration Cell with continuous Phosphorous Removal and Discharged Annually.

Treatment Process

Major Process:	
Phosphorus Removal:	Continuous
Additional Treatment:	
Discharge Mode:	Annual discharge
Effluent Disinfection Practice:	
Sludge Stabilization:	
Sludge Disposal:	

Performance Data and Compliance

Influent Flow Data		Jan	Feb	Mar	Apr	May	Jun	Jul	Aug	Sep	Oct	Nov	Dec	Limit
Avg. Raw Flow (m3/d)	Avg	336.77	353.45	344.94	390.57	418.58	358.77	338.68	330.55	251.47	178.74	225.80		0.00
Max. Raw Flow (m3/d)	Max	384.00	439.00	572.00	442.00	483.00	396.00	350.00	447.00	366.00	206.00	327.00		0.00
Total Raw Flow (m3/d)	Total	10,440.00	10,250.00	10,693.00	11,717.00	12,976.00	10,763.00	10,499.00	10,247.00	7,544.00	5,541.00	6,774.00		0.00
Influent Quality		Jan	Feb	Mar	Apr	May	Jun	Jul	Aug	Sep	Oct	Nov	Dec	Limit
BOD5/CBOD5 (mg/L)	Avg	175.00	126.00	96.00	108.00	375.00	91.00	150.00	127.00	130.00	619.00	137.00		0.00
SS (mg/L)	Avg	168.00	128.00	116.00	160.00	320.00	108.00	128.00	130.00	76.00	165.00	86.00		0.00
TP (mg/L)	Avg	22.00	15.70	8.91	10.50	7.17	13.80	24.40	6.21	5.00	24.80	6.37		0.00
Treated Flow Data		Jan	Feb	Mar	Apr	May	Jun	Jul	Aug	Sep	Oct	Nov	Dec	Limit
Avg Treated Flow (m3/d)	Avg			10,610.78	1,978.31									0.00
Max Treated Flow (m3/d)	Max			15,552.00	2,457.75									0.00
Total Treated Flow (m3/d)	Total			106,107.82	53,414.37									0.00
Treated Quality		Jan	Feb	Mar	Apr	May	Jun	Jul	Aug	Sep	Oct	Nov	Dec	Limit
BOD5/CBOD5 (mg/L)	Avg			9.33	2.50									0.00
SS (mg/L)	Avg			17.33	8.00									0.00
TP (mg/L)	Avg			0.52	0.23									0.00

Comments

<General>

[03/02/2004] Started aeration blowers.

[03/16/2004] Collected preliminary samples of cells content B, C and D.

[03/22/2004] Started Lagoon Discharge.

[04/27/2004] Last day of the Annual Lagoon discharge. All 5 sets of sampled have been collected.



Ontario Clean Water Agency
Agence Ontarienne Des Eaux

2004 Client Monthly Operations Report
The Nation Municipality

St. Albert Wastewater Lagoon & Collection System



Réunion Conseil
Council Mtg

6 / 12 / 04
D M YR

Action
Clerk
Greffier

reports
mm

Facility Description

Hub Name: Alfred Hub
Facility Type: Municipal
Classsification: Class 2 Wastewater Collection, Class 1 Wastewater Treatment
Title Holder: Municipality
Operation Status: OCWA
Operator Manager: Jacques Breen, (613) 679-4631
Asst. Ops. Mgr. Harold Wilkinson, (613) 679-4631
Client Service Rep John Kingsbury, (613) 774-3663
Capacity(m3/d): 720
Service Area: Village of St. Albert
Service Population: 1000
Inservice Date: 1995

Operational Description:

One Pumping Station and a three Cell Lagoon plus one Aeration Cell with continuous Phosphorous Removal and Discharged Annually.

Treatment Process

Major Process:
Phosphorus Removal: Continuous
Additional Treatment:
Discharge Mode: Annual discharge
Effluent Disinfection Practice:
Sludge Stabilization:
Sludge Disposal:

Performance Data and Compliance

Influent Flow Data		Jan	Feb	Mar	Apr	May	Jun	Jul	Aug	Sep	Oct	Nov	Dec	Limit
Avg. Raw Flow (m3/d)	Avg	336.77	353.45	344.94	390.57	418.58	358.77	338.68	330.55	251.47	178.74			0.00
Max Raw Flow (m3/d)	Max	384.00	439.00	572.00	442.00	483.00	396.00	350.00	447.00	366.00	206.00			0.00
Total Raw Flow (m3/d)	Total	10,440.00	10,250.00	10,693.00	11,717.00	12,976.00	10,763.00	10,499.00	10,247.00	7,544.00	5,541.00			0.00
Influent Quality		Jan	Feb	Mar	Apr	May	Jun	Jul	Aug	Sep	Oct	Nov	Dec	Limit
BOD5/CBOD5 (mg/L)	Avg	175.00	126.00	96.00	108.00	375.00	91.00	150.00	127.00	130.00	619.00			0.00
SS (mg/L)	Avg	168.00	128.00	116.00	160.00	320.00	108.00	128.00	130.00	76.00	165.00			0.00
TP (mg/L)	Avg	22.00	15.70	8.91	10.50	7.17	13.80	24.40	6.21	5.00	24.80			0.00
Treated Flow Data		Jan	Feb	Mar	Apr	May	Jun	Jul	Aug	Sep	Oct	Nov	Dec	Limit
Avg Treated Flow (m3/d)	Avg			10,610.78	1,978.31									0.00
Max Treated Flow (m3/d)	Max			15,552.00	2,457.75									0.00
Total Treated Flow (m3/d)	Total			106,107.82	53,414.37									0.00
Treated Quality		Jan	Feb	Mar	Apr	May	Jun	Jul	Aug	Sep	Oct	Nov	Dec	Limit
BOD5/CBOD5 (mg/L)	Avg			9.33	2.50									0.00
SS (mg/L)	Avg			17.33	8.00									0.00
TP (mg/L)	Avg			0.52	0.23									0.00
Comments														

<General>

[03/02/2004] Started aeration blowers.

[03/16/2004] Collected preliminary samples of cells content B, C and D.

[03/22/2004] Started Lagoon Discharge.

[04/27/2004] Last day of the Annual Lagoon discharge. All 5 sets of sampled have been collected.



Ontario Clean Water Agency
Agence Ontarienne Des Eaux

2004 Client Monthly Operations Report
The Nation Municipality - St. Albert Wastewater

St. Albert Wastewater Lagoon & Collection System

Réunion Conseil 18/10/04
Council Mtg D M YR
Action reports
Clerk mn
Greffier

Facility Description

Hub Name:	Alfred Hub
Facility Type:	Municipal
Classification	Class 2 Wastewater Collection, Class 1 Wastewater Treatment
Title Holder:	Municipality
Operation Status:	OCWA
Operator Manager:	Jacques Breen, (613) 679-4631
Asst. Ops. Mgr.	Harold Wilkinson, (613) 679-4631
Client Service Rep	John Kingsbury, (613) 774-3663
Capacity(m3/d):	720
Service Area:	Village of St. Albert
Service Population:	1000
Inservice Date:	1995

Operational Description:

One Pumping Station and a three Cell Lagoon plus one Aeration Cell with continuous Phosphorous Removal and Discharged Annually.

Treatment Process

Major Process:	
Phosphorus Removal:	Continuous
Additional Treatment:	
Discharge Mode:	Annual discharge
Effluent Disinfection Practice:	
Sludge Stabilization:	
Sludge Disposal:	

Performance Data and Compliance

Influent Flow Data		Jan	Feb	Mar	Apr	May	Jun	Jul	Aug	Sep	Oct	Nov	Dec	Limit
Avg. Raw Flow (m3/d)	Avg	336.77	353.45	344.94	390.57	418.58	358.77	338.68	330.55					0.00
Max. Raw Flow (m3/d)	Max	384.00	439.00	572.00	442.00	483.00	396.00	350.00	447.00					0.00
Total Raw Flow (m3/d)	Total	10,440.00	10,250.00	10,693.00	11,717.00	12,976.00	10,763.00	10,499.00	10,247.00					0.00
Influent Quality		Jan	Feb	Mar	Apr	May	Jun	Jul	Aug	Sep	Oct	Nov	Dec	Limit
BOD5/CBOD5 (mg/L)	Avg	175.00	126.00	96.00	108.00	375.00	91.00	150.00	127.00					0.00
SS (mg/L)	Avg	168.00	128.00	116.00	160.00	320.00	108.00	128.00	130.00					0.00
TP (mg/L)	Avg	22.00	15.70	8.91	10.50	7.17	13.80	24.40	6.21					0.00
Treated Flow Data		Jan	Feb	Mar	Apr	May	Jun	Jul	Aug	Sep	Oct	Nov	Dec	Limit
Avg Treated Flow (m3/d)	Avg			10,610.78	1,978.31									0.00
Max Treated Flow (m3/d)	Max			15,552.00	2,457.75									0.00
Total Treated Flow (m3/d)	Total			106,107.82	53,414.37									0.00
Treated Quality		Jan	Feb	Mar	Apr	May	Jun	Jul	Aug	Sep	Oct	Nov	Dec	Limit
BOD5/CBOD5 (mg/L)	Avg			9.33	2.50									0.00
SS (mg/L)	Avg			17.33	8.00									0.00
TP (mg/L)	Avg			0.52	0.23									0.00

Comments

<General>

[03/02/2004] Started aeration blowers.

[03/16/2004] Collected preliminary samples of cells content B, C and D.

[03/22/2004] Started Lagoon Discharge.

[04/27/2004] Last day of the Annual Lagoon discharge. All 5 sets of sampled have been collected.



2003 Client Monthly Operations Report
The Nation Municipality - St. Albert Wastewater
St. Albert Wastewater Lagoon & Collection System

Facility Description

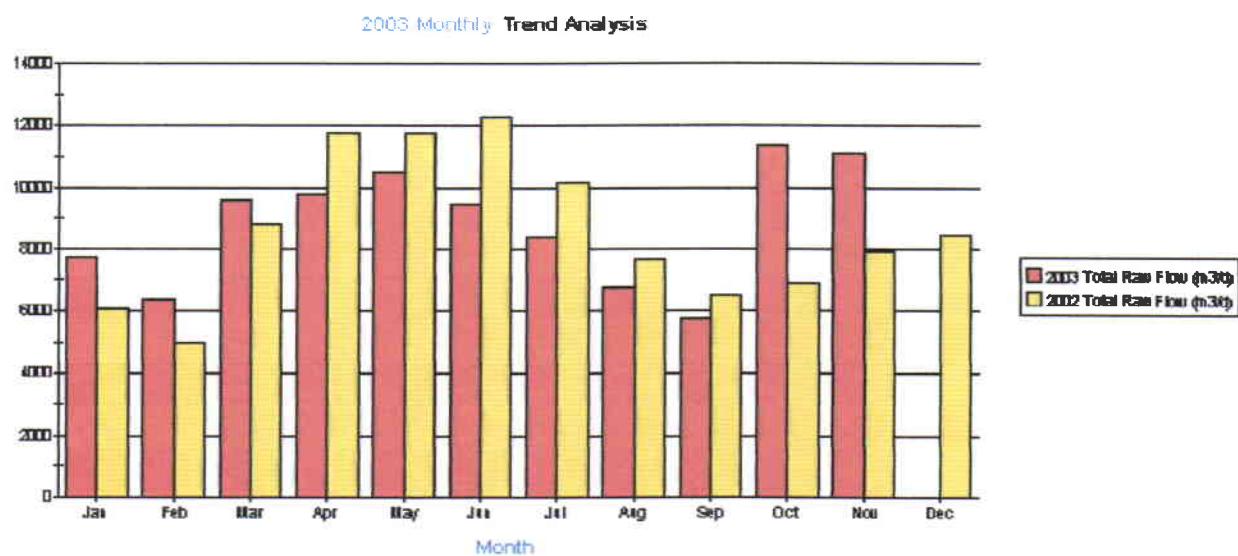
Hub Name:	Alfred Hub
Facility Type:	Municipal
Classification:	Class 2 Wastewater Collection, Class 1 Wastewater Treatment
Title Holder:	Municipality
Operation Status:	OCWA
Operator Manager:	Jacques Breen, (613) 679-4631
Asst. Ops. Mgr.	Harold Wilkinson, (613) 679-4631
Client Service Rep	John Kingsbury, (613) 774-3663
Capacity(m3/d):	720
Service Area:	Village of St. Albert
Service Population:	1000
Inservice Date:	1995

Operational Description:

One Pumping Station and a three Cell Lagoon plus one Aeration Cell with continuous Phosphorous Removal and Discharged Annually.

Treatment Process

Major Process:	
Phosphorus Removal:	Continuous
Additional Treatment:	
Discharge Mode:	Annual discharge
Effluent Disinfection Practice:	
Sludge Stabilization:	
Sludge Disposal:	





Ontario Clean Water Agency
Agence Ontarienne Des Eaux

May 2003 Operations Report

The Nation Municipality - St. Albert Wastewater

St. Albert Wastewater Lagoon & Collection System



Facility Description

Hub Name:	Alfred Hub
Classification	Facility Type: Class 2 Wastewater Collection, Class 1 Wastewater Treatment
Municipal	
Title Holder:	Municipality
Operation Status:	OCWA
Operator Manager:	Jacques Breen, (613) 679-4631
	Asst. Ops. Mgr. Harold Wilkinson, (613) 679-4631
Client Service Rep	John Kingsbury, (613) 774-3663
Capacity(m3/d):	720
Service Area:	Village of St. Albert
Service Population:	1000
Inservice Date:	1995

Operational Description:

One Pumping Station and a three Cell Lagoon plus one Aeration Cell with continuous Phosphorous Removal and Discharged Annually.

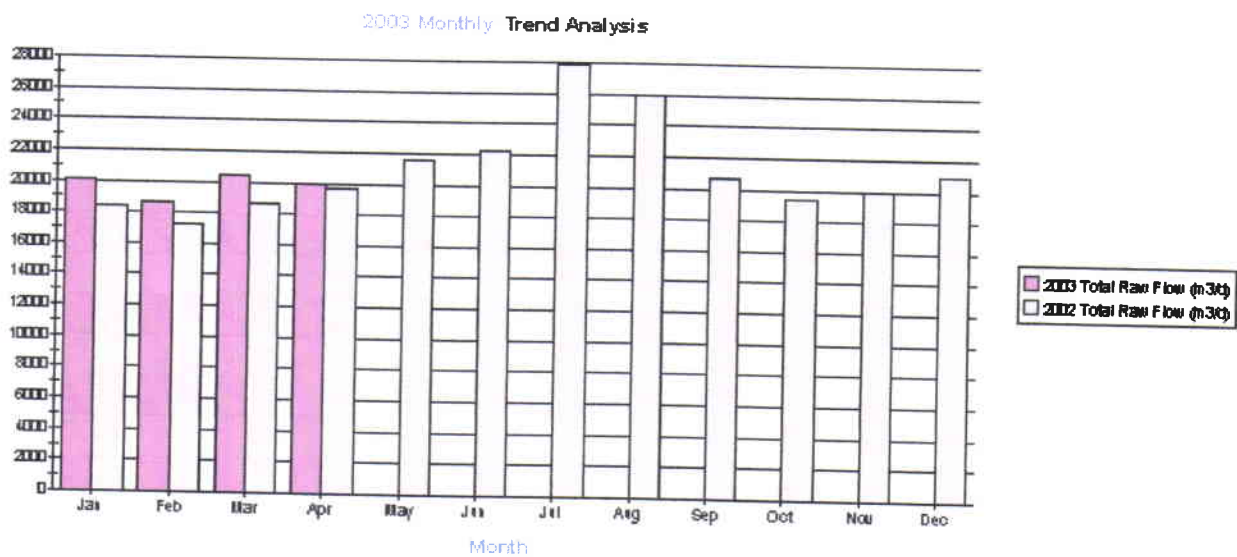
Treatment Process

Major Process:	
Phosphorus Removal:	Continuous
Additional Treatment:	
Discharge Mode:	Annual discharge
Effluent Disinfection Practice:	
Sludge Stabilization:	
Sludge Disposal:	

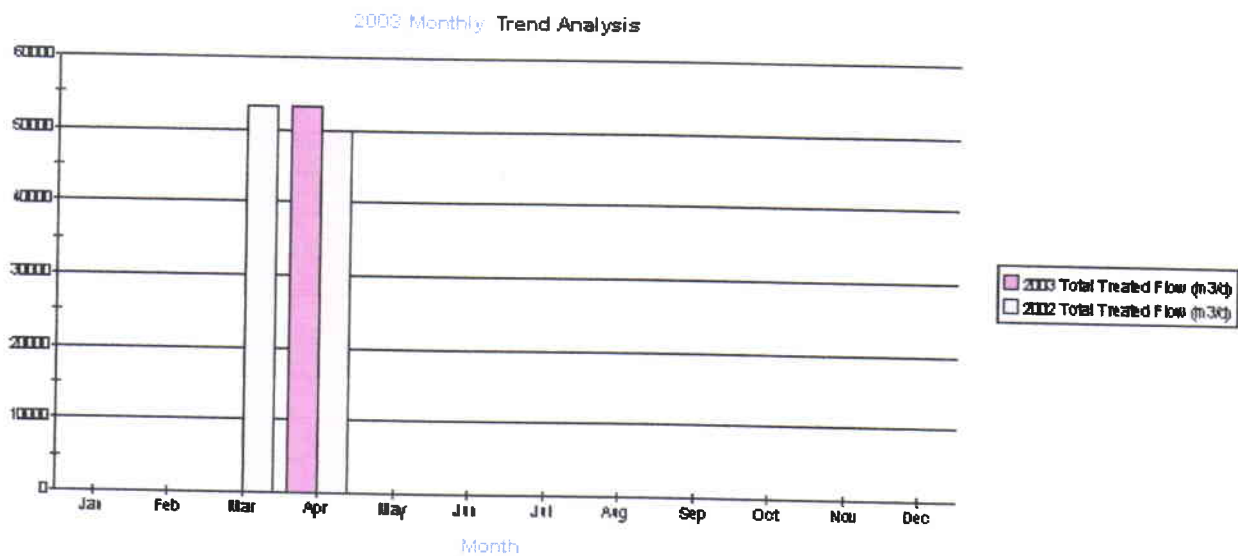
Performance Data and Compliance

Influent Flow Data		Jan	Feb	Mar	Apr
Avg. Raw Flow (m3/d)	Avg	250.29	228.54	310.34	325.23
Max. Raw Flow (m3/d)	Max	281.00	237.00	408.00	371.00
Total Raw Flow (m3/d)	Total	7,759.00	6,399.00	9,620.40	9,757.00
Influent Quality		Jan	Feb	Mar	Apr
BOD5/CBOD5 (mg/L)	Avg	161.00	101.00	124.00	125.00
SS (mg/L)	Avg	410.00	133.00	92.00	136.00
TP (mg/L)	Avg	10.70	16.00	19.40	7.77
Treated Flow Data		Jan	Feb	Mar	Apr
Avg Treated Flow (m3/d)	Avg				3,807.43
Max Treated Flow (m3/d)	Max				4,665.60
Total Treated Flow (m3/d)	Total				53,304.00
Treated Quality		Jan	Feb	Mar	Apr
BOD5/CBOD5 (mg/L)	Avg			4.67	0.50
SS (mg/L)	Avg			12.33	8.50
TP (mg/L)	Avg			0.25	0.39

Total Raw Flow



Total Treated Flow





Ontario Clean Water Agency
Agence Ontarienne Des Eaux

2003 Monthly Operations Report

The Nation Municipality - St. Albert Wastewater

St. Albert Wastewater Lagoon & Collection System

Facility Description

Hub Name:	Alfred Hub
Classification	Facility Type: Class 2 Wastewater Collection, Class 1 Wastewater Treatment
Title Holder:	Municipal
Operation Status:	OCWA
Operator Manager:	Jacques Breen, (613) 679-4631
Client Service Rep	John Kingsbury, (613) 774-3663
Capacity(m3/d):	Asst. Ops. Mgr. Harold Wilkinson, (613) 679-4631
Service Area:	720
Service Population:	Village of St. Albert
Inservice Date:	1000
	1995

Operational Description:

One Pumping Station and a three Cell Lagoon plus one Aeration Cell with continuous Phosphorous Removal and Discharged Annually.

Treatment Process

Major Process:	Continuous
Phosphorus Removal:	Annual discharge
Additional Treatment:	
Discharge Mode:	
Effluent Disinfection Practice:	
Sludge Stabilization:	
Sludge Disposal:	

Performance Data and Compliance

Influent Flow Data

		Jan	Feb	Mar
Avg. Raw Flow (m3/d)	Avg	250.29	228.54	310.34
Max. Raw Flow (m3/d)	Max	281.00	237.00	408.00
Total Raw Flow (m3/d)	Total	7,759.00	6,389.00	9,620.40

Influent Quality

		Jan	Feb	Mar
BOD5/CBOD5 (mg/L)	Avg	161.00	101.00	124.00
SS (mg/L)	Avg	410.00	133.00	92.00
TP (mg/L)	Avg	10.70	16.00	19.40

2003 Monthly Trend Analysis

